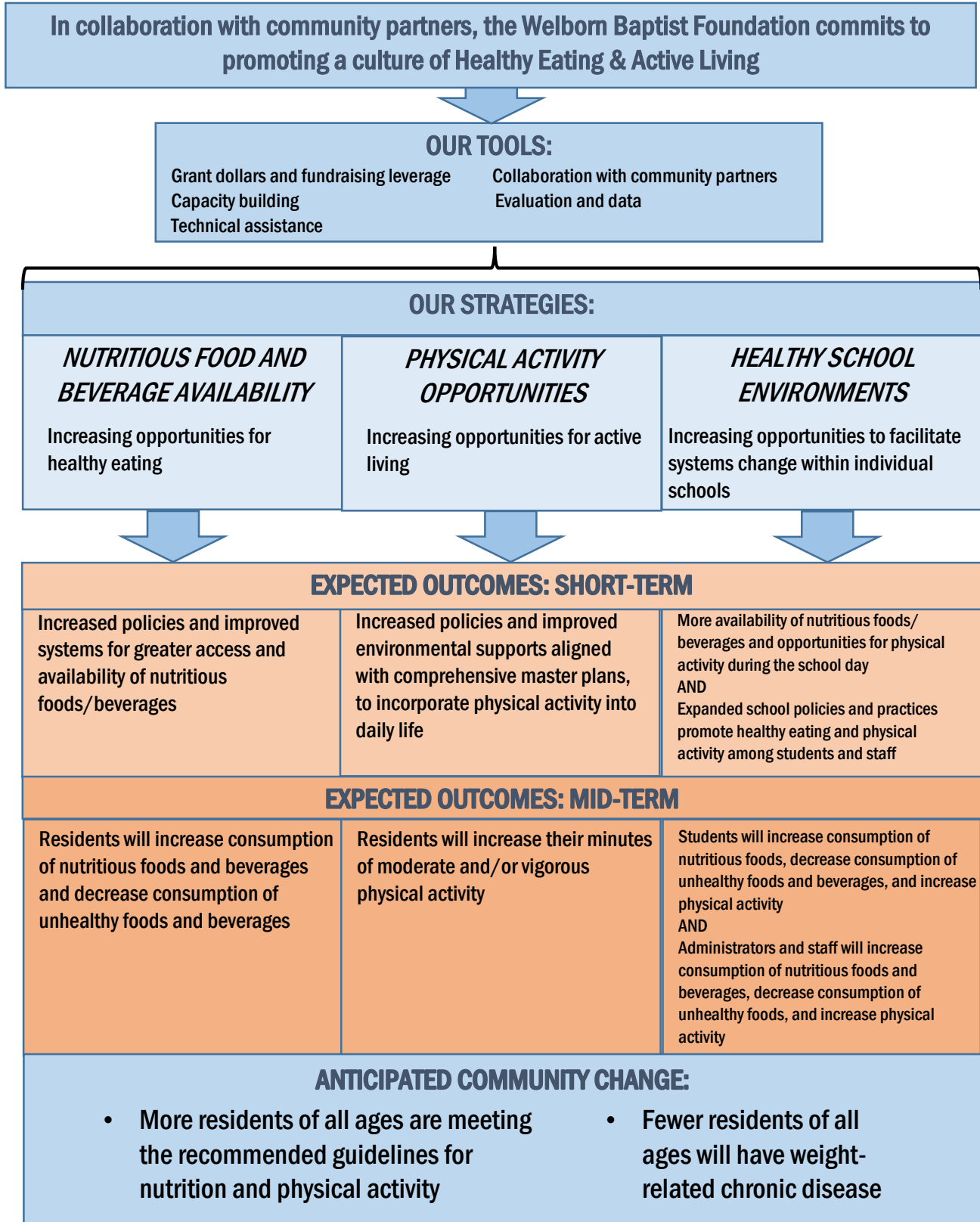


# Welbom Baptist Foundation **HEALTHY EATING & ACTIVE LIVING LOGIC MODEL**



**RESOURCES** = Available assets

**OUTCOMES** = The desired changes that will lead to community change

**STRATEGIES** = The way the assets are contributed to the cause

**COMMUNITY CHANGE** = The improvement we all want to see